

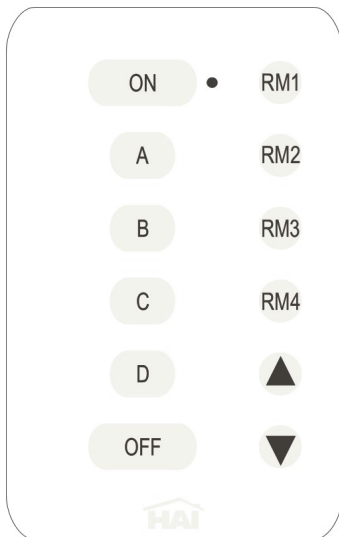


# Model 38A14-1 Scene Switch Remote Control

## DESCRIPTION

The Model 38A14-1 Scene Switch Remote Control is used for controlling rooms of HLC lighting by sending infrared (IR) signals to Model 38A00-1 6-Button Scene Switches with IR Receivers. To activate lighting, point the 38A14-1 Remote Control at a 38A00-1 Scene Switch and press the desired buttons. The buttons on the 38A14-1 Remote Control simulate pressing the pushbuttons on the 38A00-1 Scene Switch with IR Receiver. The room can be turned on, turned off, dimmed, brightened, or set to a scene (A-D).

The Model 38A14-1 Scene Switch Remote Control has 4 separate IR codes for each button so that it can be used to control up to 4 Model 38A00-1 Scene Switches with IR Receivers located in the same general area of a room.



- The “ON” pushbutton will brighten the room to 100% at each switch’s default fade rate when pressed.
- The “OFF” pushbutton will fade the room to 0% (off) at each switch’s default fade rate when pressed.
- The “A” pushbutton will adjust the lights in the room to their preset level at their default fade rate when pressed.
- The “B” pushbutton will adjust the lights in the room to their preset level at their default fade rate when pressed.
- The “C” pushbutton will adjust the lights in the room to their preset level at their default fade rate when pressed.
- The “D” pushbutton will adjust the lights in the room to their preset level at their default fade rate when pressed.
- The “▲” pushbutton will slowly brighten the room when pressed, and then stop brightening when it is released.
- The “▼” pushbutton will slowly dim the room when pressed, and then stop dimming when it is released.
- The “RM1” pushbutton will set the remote to control Scene Switches programmed for Room 1 IR commands.
- The “RM2” pushbutton will set the remote to control Scene Switches programmed for Room 2 IR commands.
- The “RM3” pushbutton will set the remote to control Scene Switches programmed for Room 3 IR commands.
- The “RM4” pushbutton will set the remote to control Scene Switches programmed for Room 4 IR commands.

## PROGRAMMING

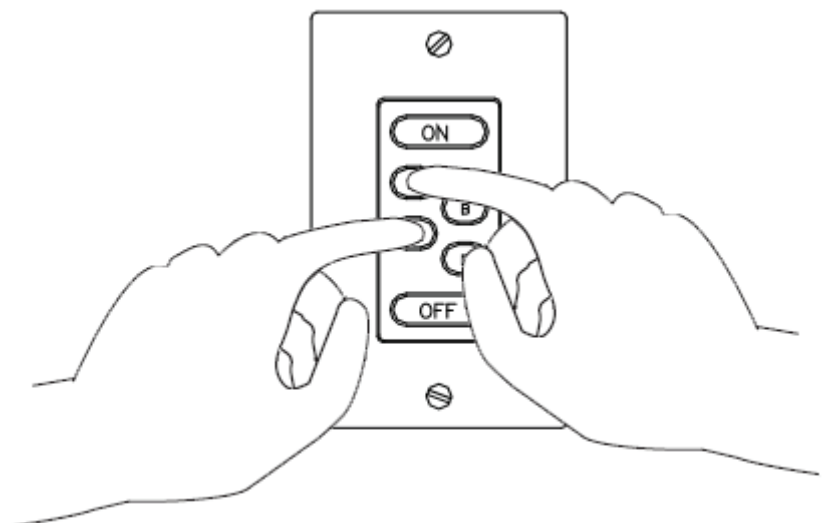
By default, the Model 38A00-1 Scene Switch with IR Receiver is configured to respond to Room 1 IR commands. It may be changed to respond to IR commands for Room 1 – Room 4, or disabled so that it does not respond to IR commands.

To program the 38A00-1 Scene Switch to respond to IR commands for Room 1 – Room 4, or disabled:

- 1) Press the A and C pushbuttons simultaneously for 1 second. A pushbutton will begin to blink indicating the programmed Room for that switch (i.e. Room 1-4 is pushbuttons A-D, respectively).

**Note:** If the current Room is programmed to OFF (disabled), upon entering programming mode, the “A” pushbutton will blink.

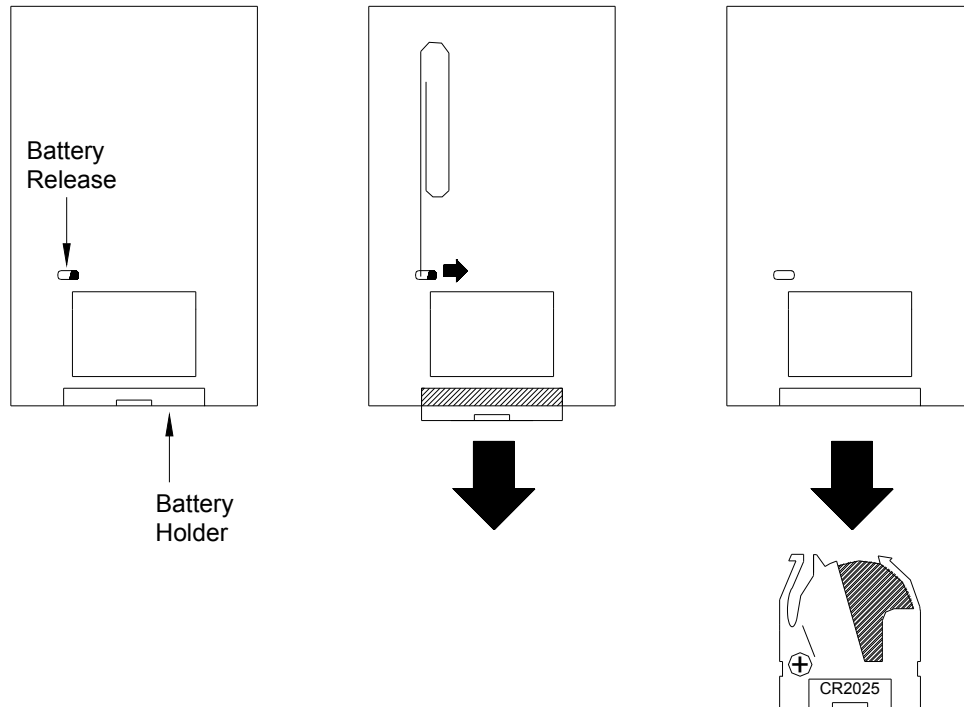
- 2) Press the pushbutton that corresponds to the Room that you wish to program (i.e. Room 1-4 is pushbuttons A-D, respectively) or “OFF” to disable. The respective pushbutton will begin to blink.
- 3) Press the “ON” pushbutton to save the setting in the switch and exit programming.



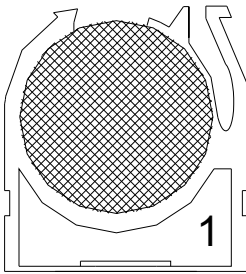
## BATTERY INSTALLATION

The Model 38A14-1 requires one CR2025 lithium button cell battery (included). To install or replace the battery, remove the Battery Holder as indicated below:

- 1) Insert a paper clip or small-bladed screwdriver into the Battery Release slot and shift the latch to the right while sliding the Battery Holder from the battery compartment.



- 2) Flip the Battery Holder over and insert the battery observing proper polarity.



- 3) Insert the Battery holder into the battery compartment and snap into place.

## OPERATION

To control a Model 38A00-1 Scene Switch with IR Receiver:

- a) Press the appropriate Room button on the Remote Control that corresponds with the Scene Switch that you intend to control.
- b) From within 25 feet, press the desired buttons on the Remote Control to simulate pressing the pushbuttons on the Scene Switch.
- c) Press a different Room button on the Remote Control that corresponds with different Scene Switch that you intend to control.
- d) From within 25 feet, press the desired buttons on the Remote Control to simulate pressing the pushbuttons on the Scene Switch.

**Note:** The Remote Control must be within 25 feet and aimed directly at the Scene Switch you intend to control for the transmission to succeed. Any object in the direct line-of-sight of the Remote Control and Scene Switch may cause the signal to be unsuccessful.